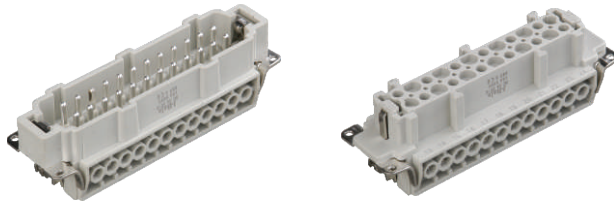


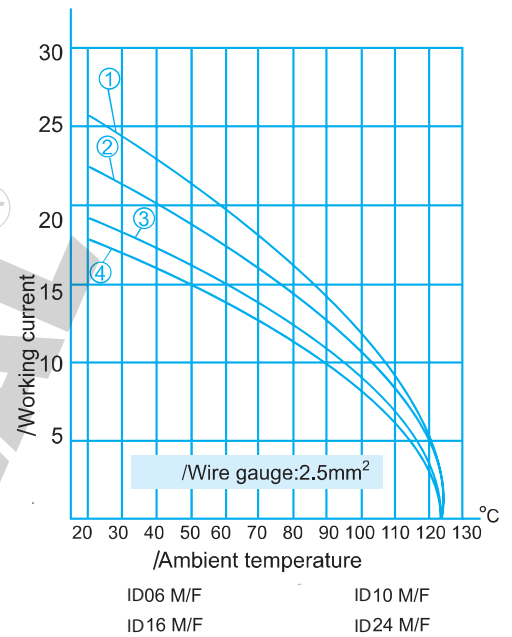
Heavy Duty Connectors

technical characteristics



DIN IEC 60512-3

Control and test procedures according to DIN IEC 60512-3



Current carrying capacity

The current carrying is limited by maximum temperature of materials for inserts and contacts including terminals

Specifications

DIN VDE 0627
DIN VDE 0110
DIN EN 61984

Inserts	
Number of contacts	6, 10, 16, 24, 32(2x16) 48(2x24)+PE 06, 12(2x06)+PE
working current (see current carrying capacity)	16A, 32A
working voltage	500V
Pollution degree	3
Rated impulse voltage	6KV
Insulation resistance	$\geq 10^{10} \Omega$
Material	Polycarbonate
Temperature range	-40°C... +125°C
(UL94) / Flammability acc.to UL94	V0
working voltage acc.to UL/CSA	600V
Mechanical working life(mating cycles)	≥ 500

Contacts

Material	Copper alloy
Surface	silver-plated
Contact resistance	$\leq 1m \Omega$
Terminal	
Screw terminal	
Wire gauge	1.0-2.5mm ² AWG 18-14
Screw terminal tightening	0.5Nm
Stripping length	7.0mm
Crimp terminal	
Wire gauge	0. 14-4. 0 mm ² AWG 26-12
Stripping length	7.5mm

ID-HDC5-4+ 

HA Series 4 Poles of connector

Technical data

10A
230/250V
UL94): V0
IP65

M20, PG13.5
Rated current: 10A
Rated voltage: 230/250V
Flammability acc. to UL94: V0
Degree of protection acc. to DIN40 050: IP65
Terminal: Screw terminal
Thread: M20, PG13.5



DC5M



DC5M



DC5F



DC5F



DC5H-TE-2B



DC5H-TE-2B



DC5H-OB-1L



DC5H-TE-2B-1L

CAL NO

ID-HDC-050-1
Top entry

ID-HDC-050-2
Cable to cable

ID-HDC5-4+ 

HE Series 6 Poles of connector

Technical data

16A
400/500V
UL94): V0
IP65

M20, PG13.5
Rated current: 16A
Rated voltage: 400/500V
Flammability acc. to UL94: V0
Degree of protection acc. to DIN40 050: IP65
Terminal: Screw terminal
Spring terminal
Thread: M20, PG13.5



DC6M



DC6M



DC6M



DC6M



DC6M



DC6M



DC6F



DC6F



DC6F



DC6F



DC6F



DC6F



DC6B-OB-1L



DC6B-OB-1L



DC6B-CB-1L



DC6B-CB-1L



DC6B-CB-1L-C



DC6B-CB-1L-C

CAL NO

ID-060-1D
Side entry

ID-060-2D
Top entry

ID-060-3D
Surface mounted

ID-060-4D
Surface mounted

ID-060-1DC
Bulkhead mounted

ID-060-2DC
Bulkhead mounted

ID-HDC-10-10+ 

HE Series 10 Poles of connector (With 2 levers)

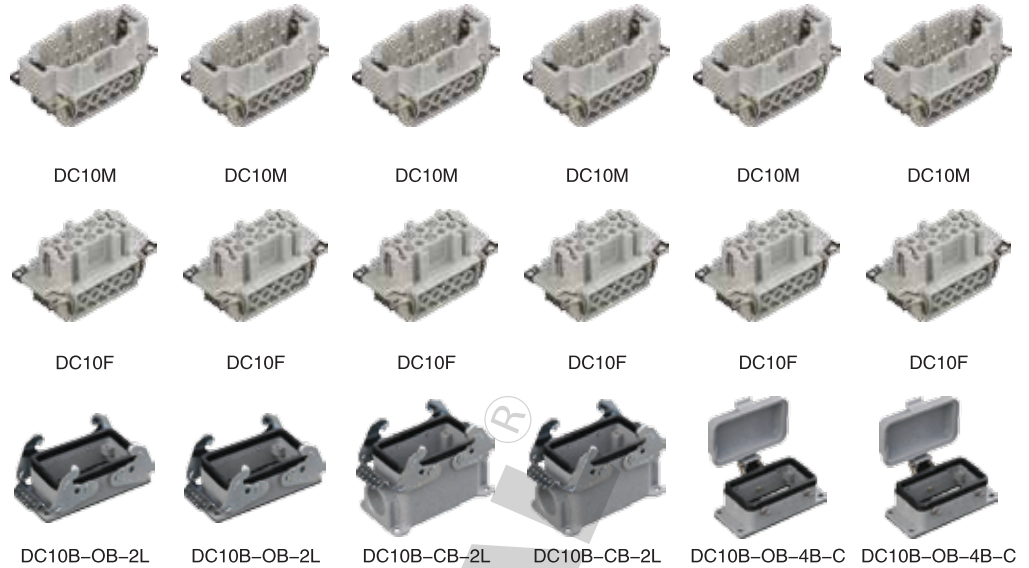
Technical data

16A
400/500V
V0
IP65

M20, M25,
PG13.5, PG16

Rated current: 16A
Rated voltage: 400/500V
Flammability acc. to UL94: V0
Degree of protection acc. to
DIN40 050: IP65

Terminal: Screw terminal
Spring terminal
Thread: M20, M25, PG13.5, PG16



CAL NO

ID-HDC-010-1
Side entry
BOS

ID-HDC-010-2
Top entry
BOT

ID-HDC-010-3
Surface mounted
BCS

ID-HDC-010-4
Surface mounted
BCT

ID-HDC-010-1C
Bulkhead mounted
BOC

ID-HDC-010-2C
Bulkhead mounted
BOCT

ID-HDC-10-10+ 

HE Series 10 Poles of connector (With 1 lever)

Technical data

16A
400/500V
V0
IP65

M20, M25,
PG13.5, PG16

Rated current: 16A
Rated voltage: 400/500V
Flammability acc. to UL94: V0
Degree of protection acc. to
DIN40 050: IP65

Terminal: Screw terminal
Spring terminal
Thread: M20, M25, PG13.5, PG16



CAL NO

ID-HDC-010-1D
Side entry

ID-HDC-010-2D
Top entry

ID-HDC-010-3D
Surface mounted

ID-HDC-010-4D
Surface mounted

ID-HDC-010-1DC
Bulkhead mounted

ID-HDC-010-2DC
Bulkhead mounted

ID-HDC-16+16 

HE Series 16 Poles of connector (With 2 levers)

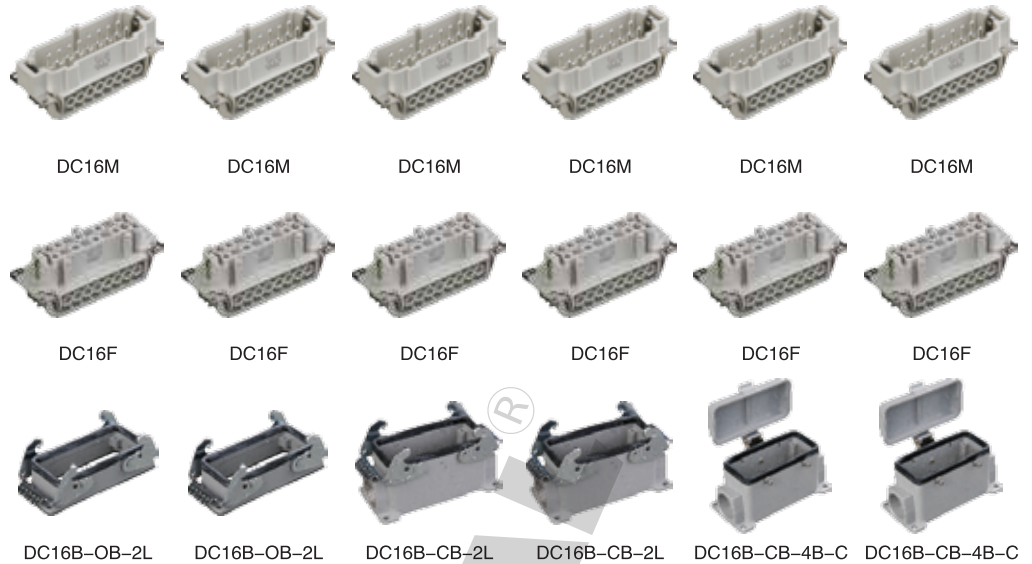
Technical data

16A
400/500V
V0
IP65

M25, M36,
PG21, PG29

Rated current: 16A
Rated voltage: 400/500V
Flammability acc. to UL94: V0
Degree of protection acc. to
DIN40 050: IP65

Terminal: Screw terminal
Spring terminal
Thread: M25, M36, PG21, PG29



CAL NO

ID-HDC-016-1
Side entry

ID-HDC-016-2
Top entry

ID-HDC-016-3
Surface mounted

ID-HDC-016-4
Surface mounted

ID-HDC-016-3C
Bulkhead mounted

ID-HDC-016-4C
Bulkhead mounted

ID-HDC-16+16 

HE Series 16 Poles of connector (With 1 lever)

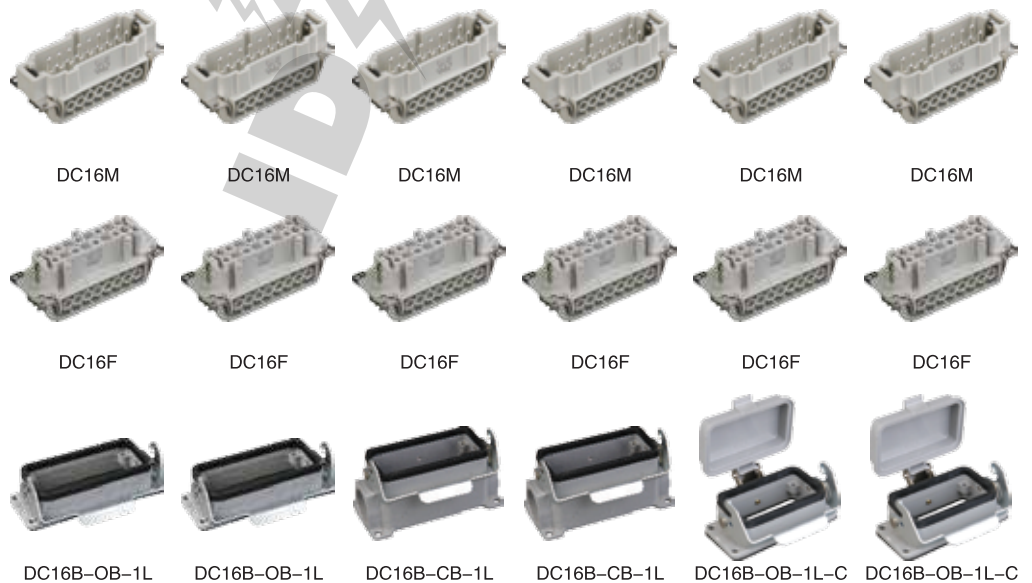
Technical data

16A
400/500V
V0
IP65

M25, M36,
PG21, PG29

Rated current: 16A
Rated voltage: 400/500V
Flammability acc. to UL94: V0
Degree of protection acc. to
DIN40 050: IP65

Terminal: Screw terminal
Spring terminal
Thread: M25, M36, PG21, PG29



CAL NO

ID-HDC-016-1D
Side entry

ID-HDC-016-2D
Top entry

ID-HDC-016-3D
Surface mounted

ID-HDC-016-4D
Surface mounted

ID-HDC-016-1DC
Bulkhead mounted

ID-HDC-016-2DC
Bulkhead mounted

ID-HDC-24+24 Ⓟ

HE Series 24 Poles of connector (With 2 levers)

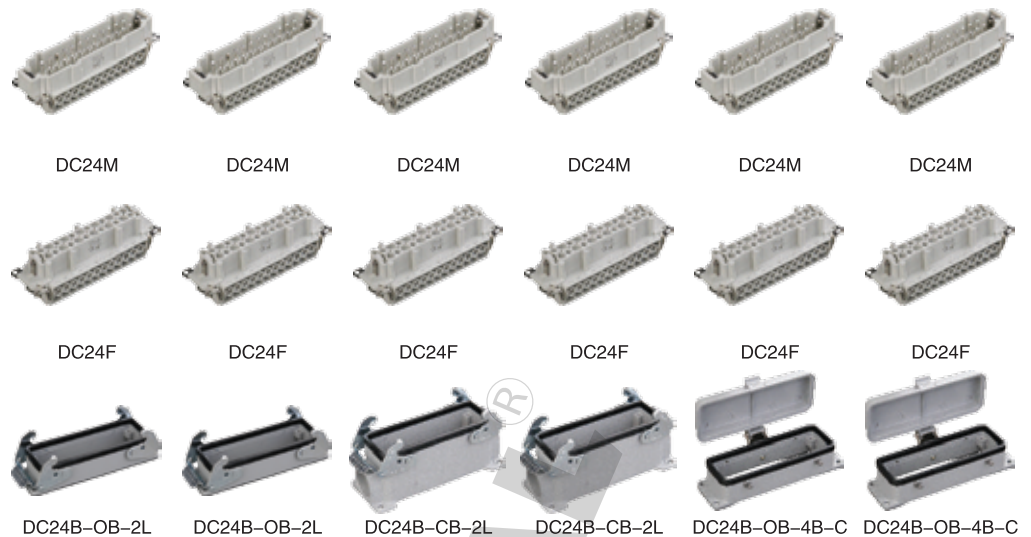
Technical data

16A
400/500V
V0
IP65

M25, M36,
PG21, PG29

Rated current: 16A
Rated voltage: 400/500V
Flammability acc. to UL94: V0
Degree of protection acc. to
DIN40 050: IP65

Terminal: Screw terminal
Spring terminal
Thread: M25, M36, PG21, PG29



CAL NO

ID-HDC-024-1
Side entry

ID-HDC-024-2
Top entry

ID-HDC-024-3
Surface mounted

ID-HDC-024-4
Surface mounted

ID-HDC-024-1C
Bulkhead mounted

ID-HDC-024-2C
Bulkhead mounted

ID-HDC-24+24 Ⓟ

HE Series 24 Poles of connector (With 1 lever)

Technical data

16A
400/500V
V0
IP65

M25, M36,
PG21, PG29

Rated current: 16A
Rated voltage: 400/500V
Flammability acc. to UL94: V0
Degree of protection acc. to
DIN40 050: IP65

Terminal: Screw terminal
Spring terminal
Thread: M25, M36, PG21, PG29



CAL NO

ID-HDC-024-1D
Side entry

ID-HDC-024-2D
Top entry

ID-HDC-024-3D
Surface mounted

ID-HDC-024-4D
Surface mounted

ID-HDC-024-1DC
Bulkhead mounted

ID-HDC-024-2DC
Bulkhead mounted

ID-HDC-16+16

HE Series 32 Poles of connector

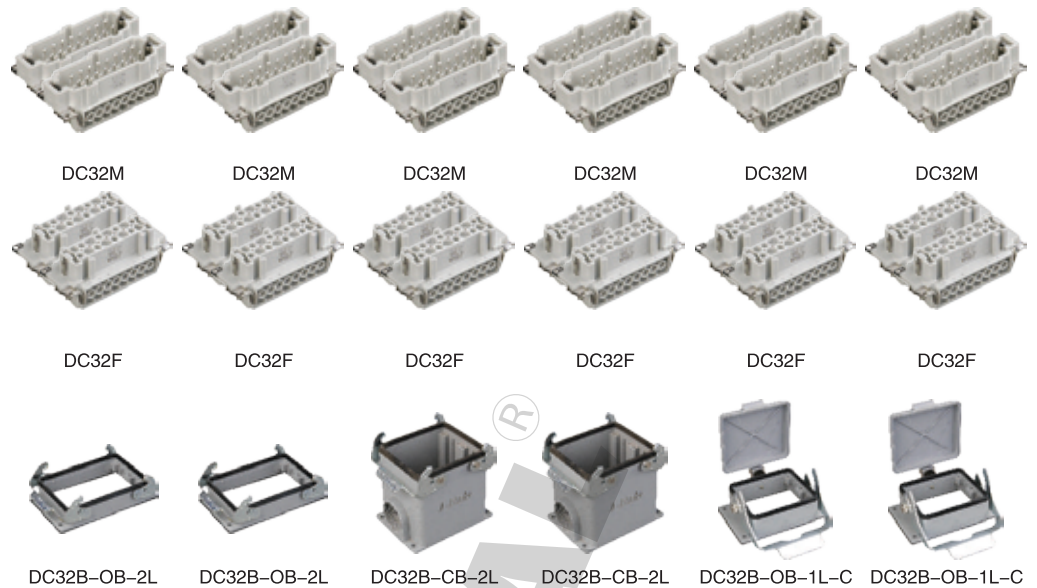
Technical data

16A
400/500V
V0
IP65

M36, M40,
PG29, PG36

Rated current: 16A
Rated voltage: 400/500V
Flammability acc. to UL94: V0
Degree of protection acc. to
DIN40 050: IP65

Terminal: Screw terminal
Spring terminal
Thread: M36, M40, PG29, PG36



CAL NO

ID- HDC-032-1
Side entry

ID- HDC-032-2
Top entry

ID- HDC-032-3
Surface mounted

ID- HDC-032-4
Surface mounted

ID- HDC-032-1DC
Bulkhead mounted

ID- HDC-032-2DC
Bulkhead mounted

ID-HDC-24+24

HE Series 48 Poles of connector

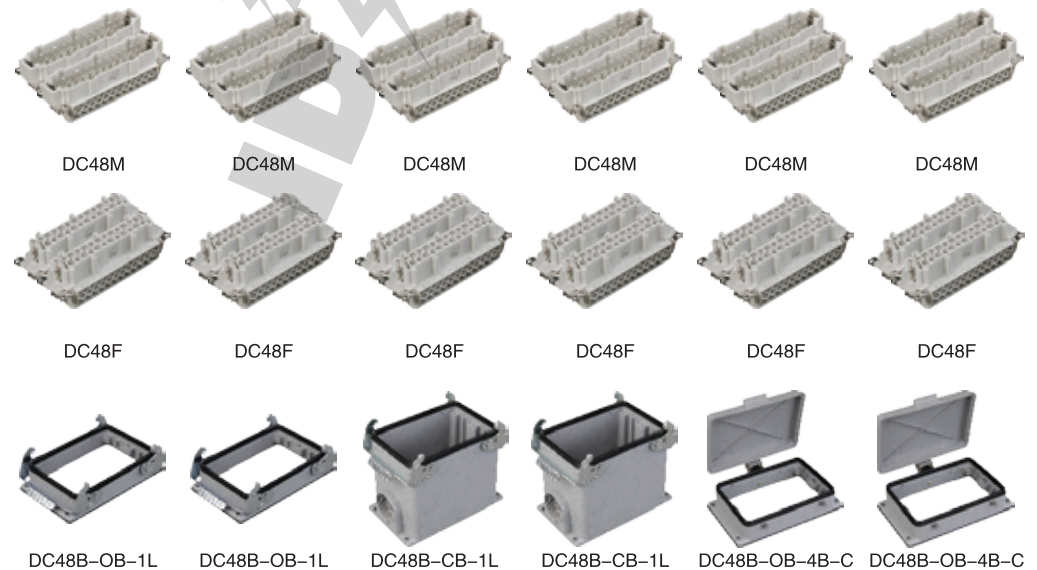
Technical data

16A
400/500V
V0
IP65

M36, M40,
PG29, PG36

Rated current: 16A
Rated voltage: 400/500V
Flammability acc. to UL94: V0
Degree of protection acc. to
DIN40 050: IP65

Terminal: Screw terminal
Spring terminal
Thread: M36, M40, PG29, PG36



CAL NO

ID- HDC-048-1
Side entry

ID- HDC-048-2
Top entry

ID- HDC-048-3
Surface mounted

ID- HDC-048-4
Surface mounted

ID- HDC-048-1DC
Bulkhead mounted

ID- HDC-048-2DC
Bulkhead mounted

ID-HDC 06-35A

6 + ⊕

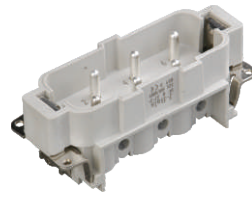
12 + ⊕

Technical data

35A
 500V

0.5~6.0mm²

Rated current: 35A
 Rated voltage: 500V
 Terminal: Screw terminal
 Wire gauge: 0.5~6.0mm²



DC061-M



DC121-M



DC061-F



DC121-F

CAL NO

ID-HDC-35/6

ID-HDC-35/12

ID-HDC 04-80A

4/0 + ⊕

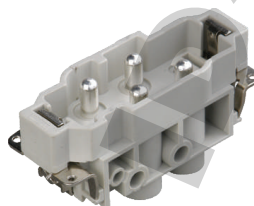
4/2 + ⊕

Technical data

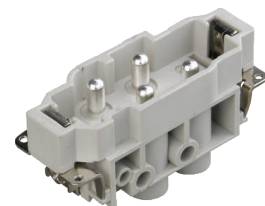
80A 16A
 690V 400V

1.5~16.0mm²
 0.5~2.5mm²

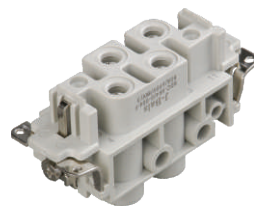
High Voltage (HV): 80A
 High Current: 690V
 Rated current: 16A
 Rated voltage: 400V
 Terminal: Screw terminal
 Wire gauge: 1.5~16.0mm²
 Wire gauge: 0.5~2.5mm²



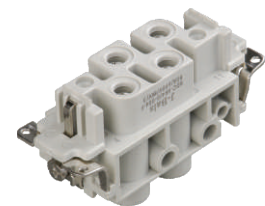
DC061-M



DC121-M



DC061-F



DC121-F

CAL NO

ID-HDC-80/4-0

ID-HDC-80/4-2